

# For Creative Minds

For easy use, the “For Creative Minds” section may be photocopied or downloaded from the *Carolina’s Story* homepage at [www.ArbordalePublishing.com](http://www.ArbordalePublishing.com) by the owner of this book. Please do not write in this book.

## Loggerhead Turtle Fun Facts

The top part of a turtle’s shell is called a **carapace**. The bottom part is called the **plastron**. The shell is part of the turtle’s body.

Sea turtles cannot pull their heads into their shells as land turtles can.

A female loggerhead sea turtle crawls onto the beach, digs a nest and lays 100 to 150 eggs. The eggs are about the size of ping-pong balls and hatch after about two months.

The female loggerhead hatchlings that survive into adulthood will return to the same region to lay their eggs.

For the mom and the hatchlings, one way back to the ocean is to follow the reflected light of the moon or stars.

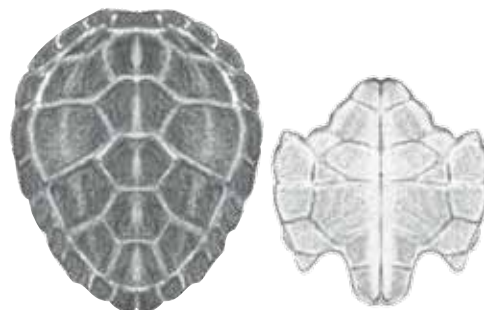
Turtles are **reptiles**. They are **cold-blooded** and breathe air. Because they breathe air, sea turtles must come to the water’s surface where they may be hit by boats.

Sea turtles, especially hatchlings, love to eat jellyfish (among other things)—because the jellyfish can’t swim away. Sea turtles often mistake floating plastic bags for jellyfish. The plastic can hurt turtles and other animals. Some sea turtles can hold their breath for up to four hours while they sleep. They like to hide in rocky areas to sleep.

A sea turtle needs sunlight to stay healthy; just like you!

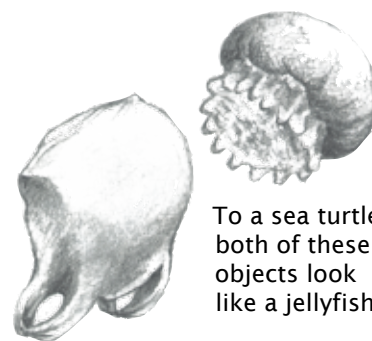
### How do you measure up to a loggerhead?

A full-grown loggerhead’s shell is 3 to 3½ feet in diameter. A full-grown loggerhead sea turtle can weigh 360 pounds.

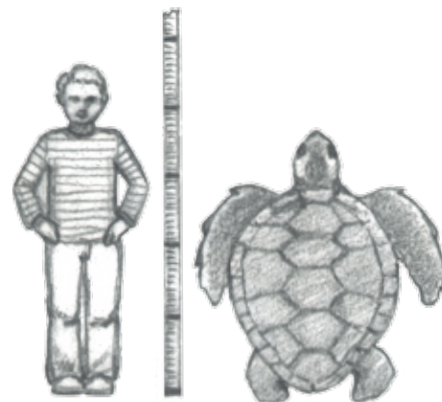


Carapace

Plastron



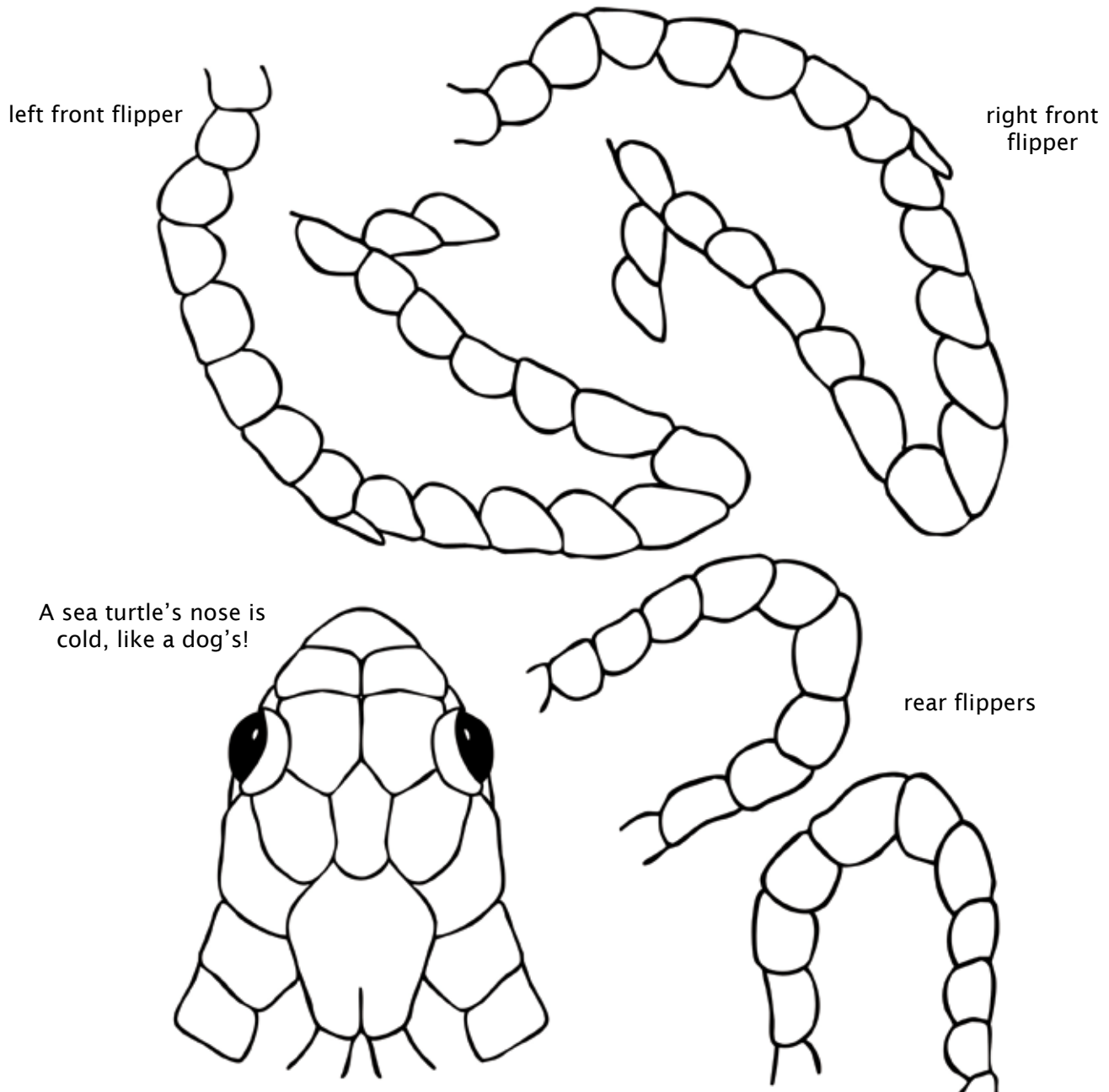
To a sea turtle, both of these objects look like a jellyfish.

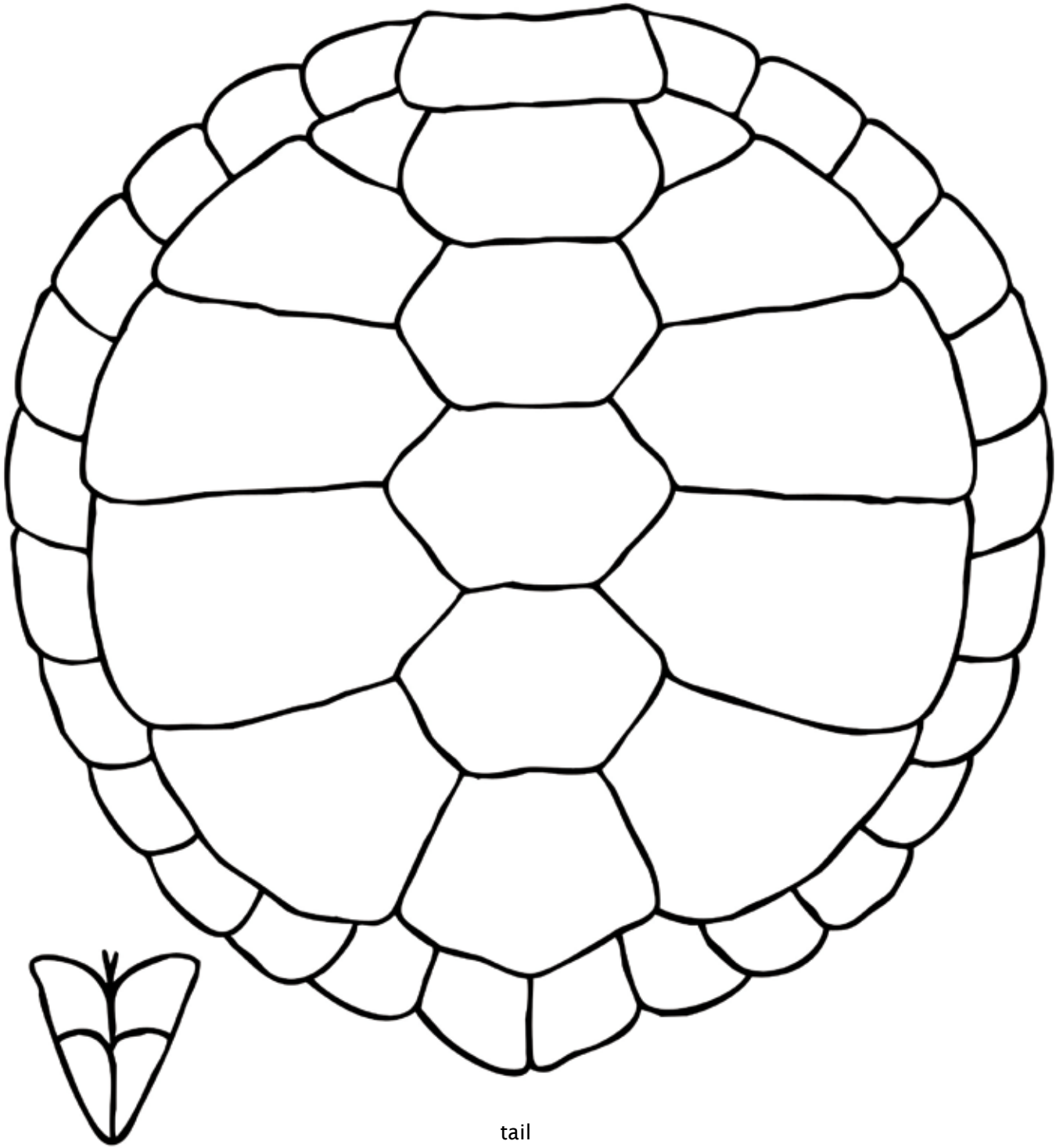


## Make your own Sea Turtle

Directions: Do not write or color in this book. Copy, trace, or download these pages from [www.ArbordalePublishing.com](http://www.ArbordalePublishing.com). Color and cut out each piece, and tape them together. The shell may be taped or glued to a paper plate for extra stability, if desired.

Sea turtles have flippers to help them swim instead of claws and/or webbed feet, like other types of land and freshwater turtles. They use their front flippers for swimming and their back flippers for steering.





Note: The sea turtle craft illustrations are not scientifically accurate for a specific sea turtle.





Channel has surgery after being hit by a boat.



Hamlin, who was trapped in a fishing pot line, after surgery with an IV tube. Dr. Tom tied down his flipper so he wouldn't rip the stitches.



A healthy turtle donates blood for a sick turtle.

There were several other injured or sick sea turtles in the hospital with Carolina. All of the turtles seen here got better and went home to the ocean too!



Hamlin gets a splint.



Big Girl gets her back scratched just before her release.